



**WALLTITE®**

The airtight insulation solution

# Refurbished masonry wall insulation (independent metal frame)

Data sheet 3.3



 **BASF**

We create chemistry

# Refurbished masonry wall insulation (independent metal frame) Data sheet 3.3

## Description

WALLTITE can be applied directly onto a solid masonry wall, around the frame/channel brackets, without the need for traditional adhesion promoters or mechanical fixings.

This method greatly reduces repeating thermal bridges through the insulation caused by either timber studs or metal frames.

The resulting continuous insulation and air barrier system will provide a permanent solution for any 'hard to treat' solid wall situation.

## Certification

BBA Certificate No. 11/4816.

WALLTITE has undergone various performance tests. Certificates are available on request.

## Technical data

Specification	Dry lining of solid masonry wall
NBS clause	P10
Lambda 90/90	0.025 to 0.028W/mK
Fire rating	Class 1 to BS 476 Part 7
$\mu$	61.12

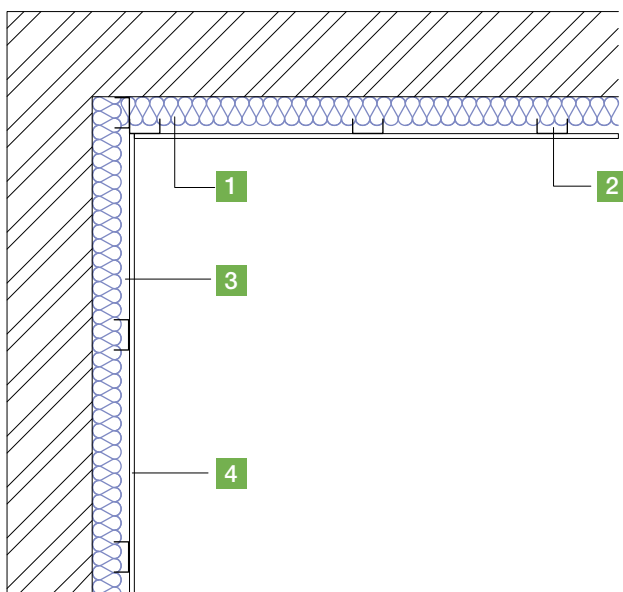
## U-values

Thickness of WALLTITE (mm)	U-value (W/m <sup>2</sup> K)
120	0.20
85	0.26
65	0.34



## Typical detail:

Existing solid wall



1. WALLTITE CL100 insulation between and behind studwork to achieve target U-value
2. Galvanised metal frame independent of the wall
3. Unventilated air space
4. 12.5mm vapourcheck wallboard and skim finish



**WALLTITE®**

BASF plc, Alfreton Trading Estate, Wimsey Way, Somercotes, Alfreton, Derbyshire DE55 4NL

Tel +44 (0)1773 601166 Fax +44 (0)1773 602089 E-mail walltite-uk@basf.com [www.walltite.basf.co.uk](http://www.walltite.basf.co.uk)